



# Regional Equity Network

## Advancing Equity Through Transit Corridor Planning

New Partners for Smart Growth  
February 3, 2012



*We help build and sustain vibrant  
neighborhoods in underserved  
communities throughout Washington.*



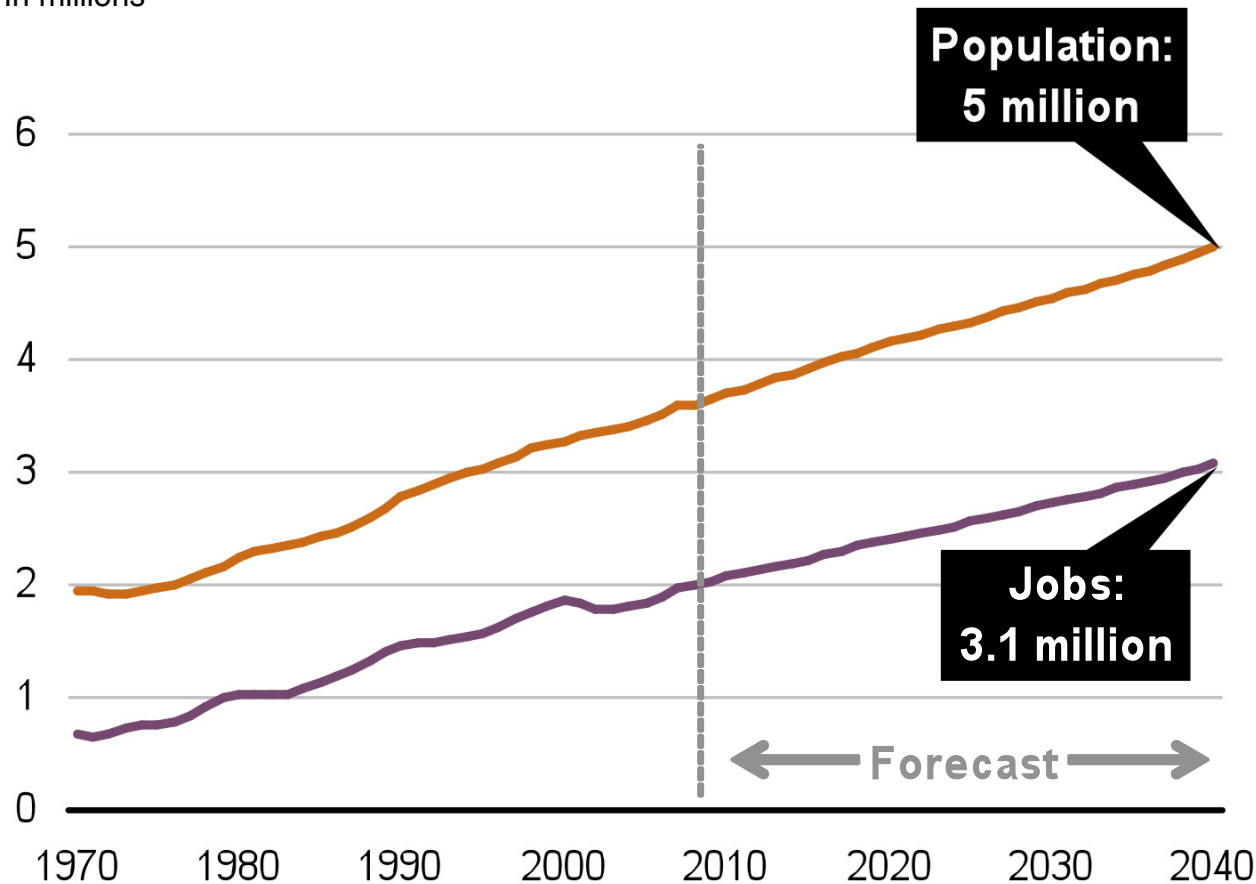
Puget Sound Regional Council

PSRC

# Our Region is Growing

## Regional Growth Estimates

In millions



**36% increase in population – 1.5 million**

**51% increase in jobs by 2040 – 1.2 million**

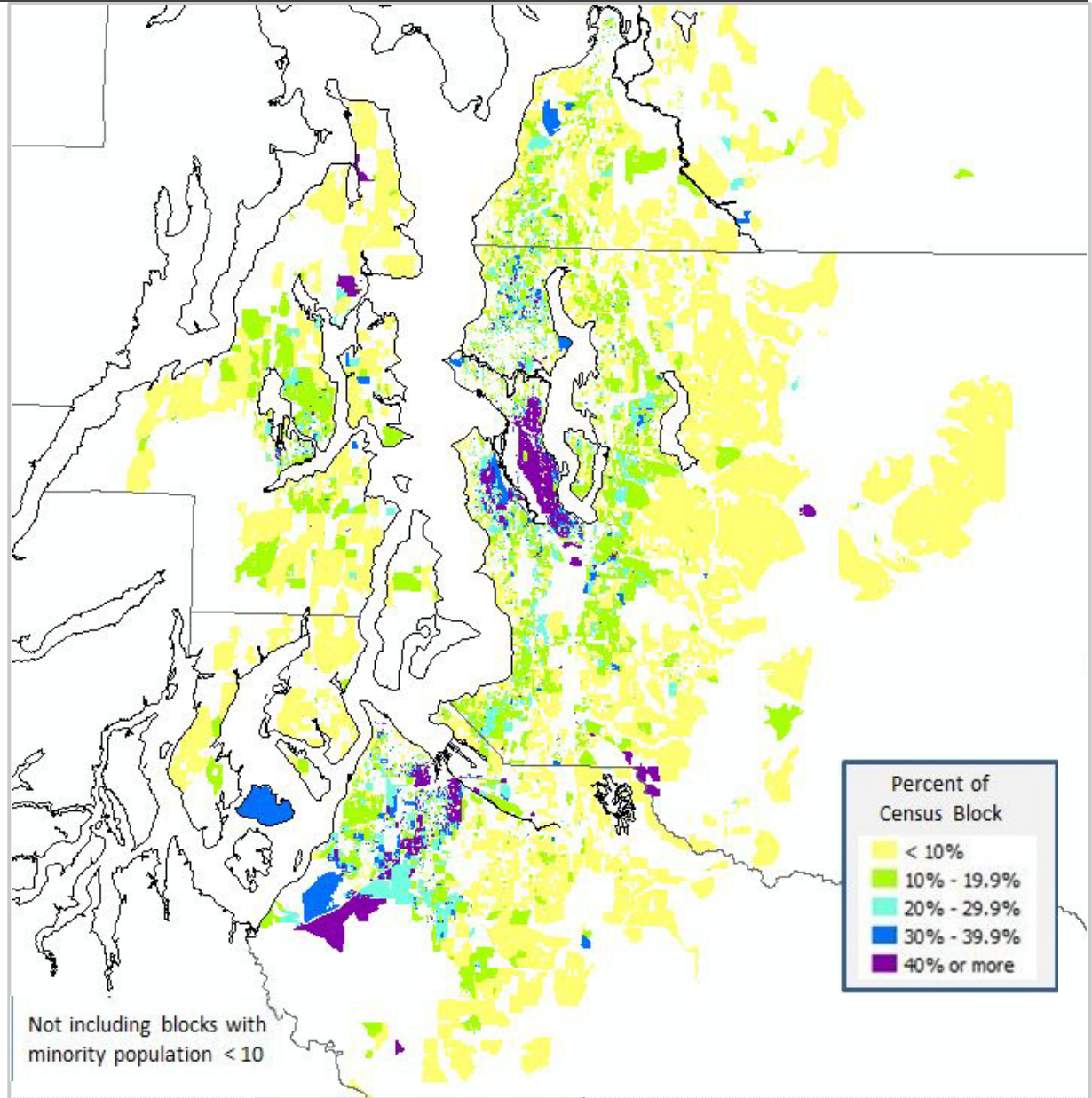
**By 2040, 65+ population will double**

**More diverse – Percent people of color has doubled since 1990**

# The region is growing increasingly diverse

## Minority Populations 1990

14.9% of Regional Total



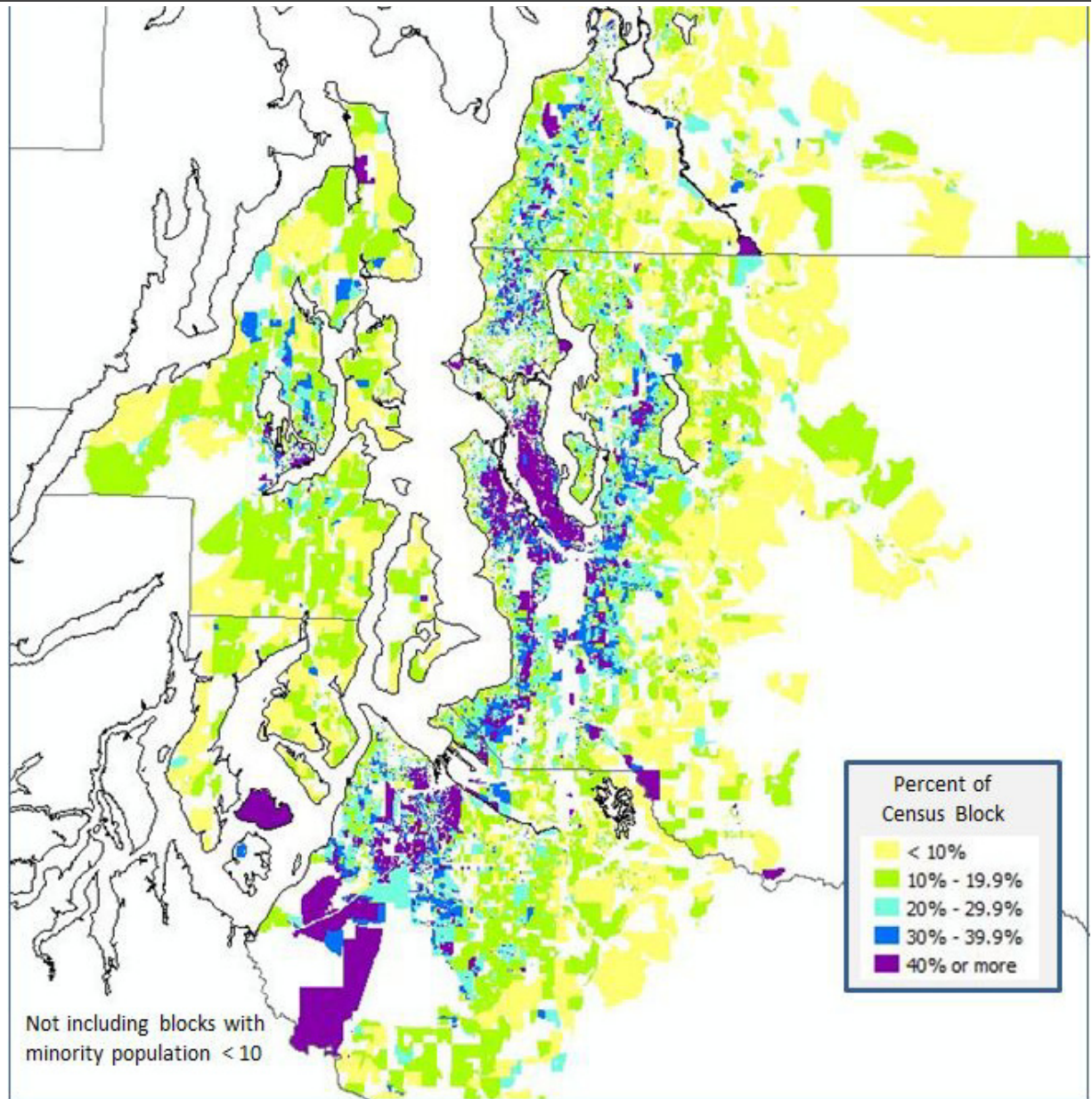
Source: 1990 Census



# The region is growing increasingly diverse

## Minority Populations 2000

**23.6% of Regional Total**

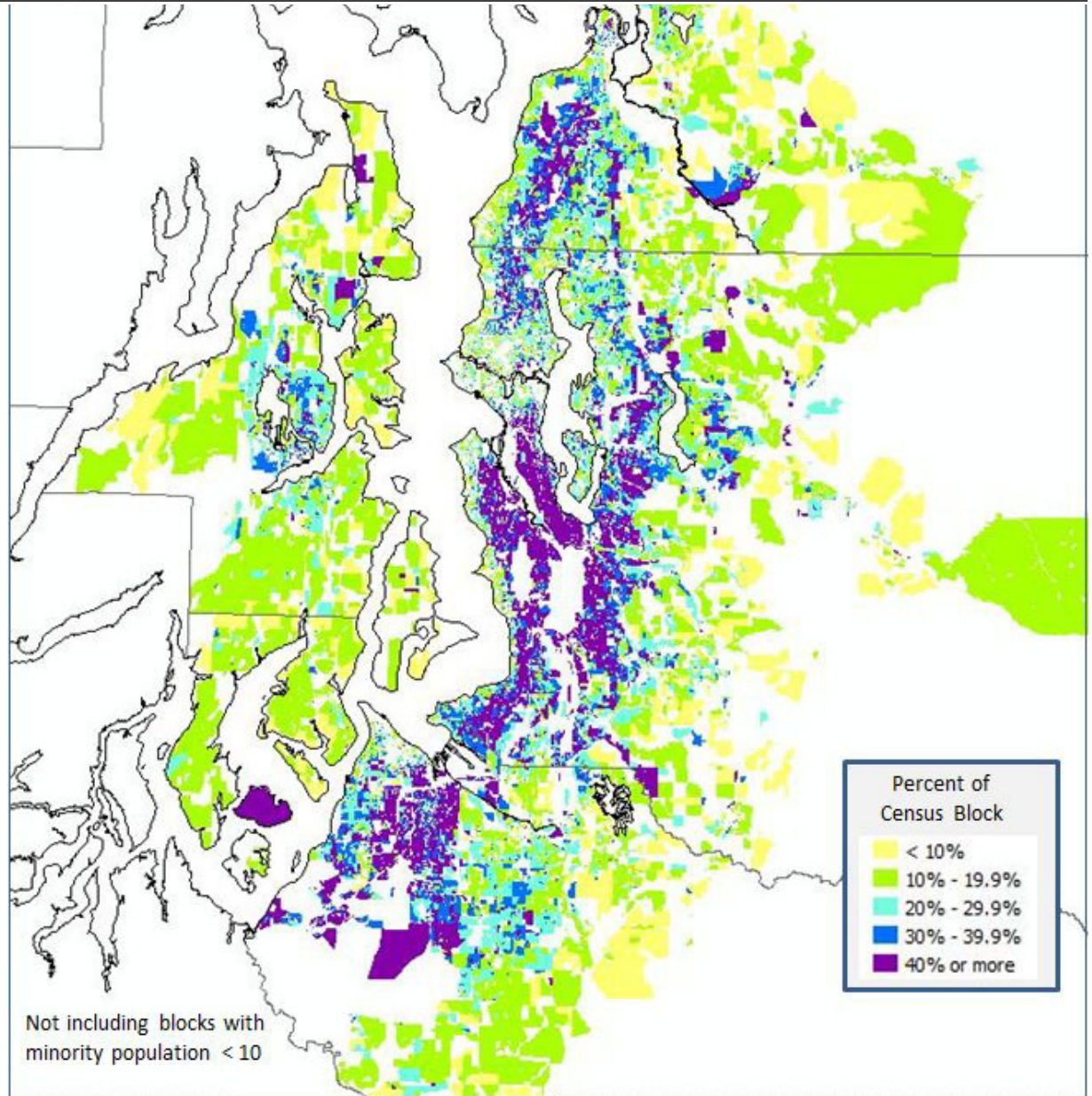


Source: 2000 Census

# The region is growing increasingly diverse

## Minority Populations 2010

**31.2% of Regional Total  
—doubling in last 20  
years**

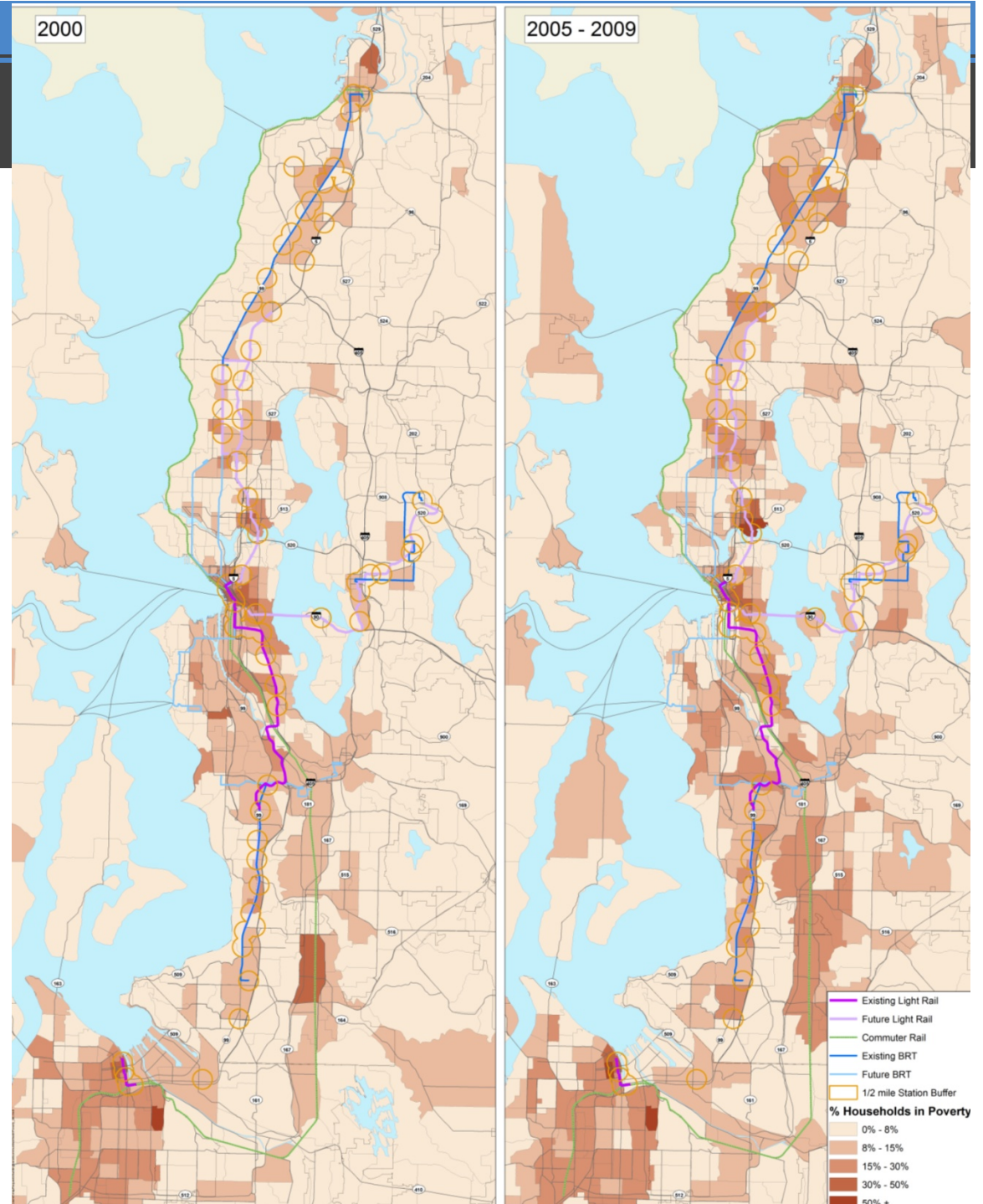


Source: 2010 Census



# Percent Households in Poverty By Census Tract

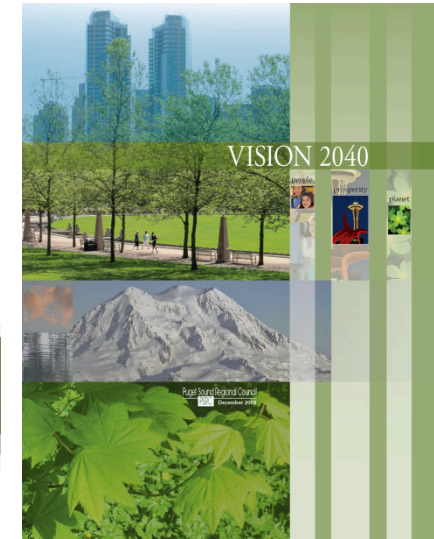
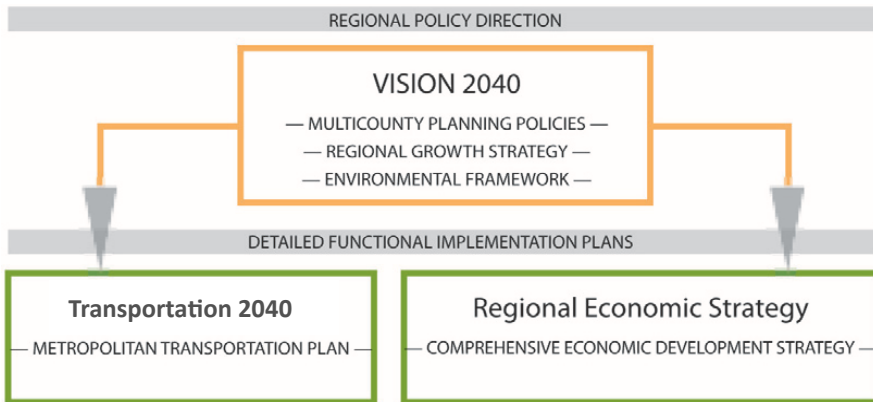
Concentrations of  
poverty along the  
transit corridors.



# State Growth Management Act

## Integrated Regional Planning

Regional policies for land use, transportation and economic development planning are integrated



# GTC Program Components

## Corridor Action Strategies

- Analyze current conditions and needs
- Develop implementation strategies

## Regional Equity Network

- Create region-wide network to promote social equity
- Administer capacity building sub-grants to non-profits

## Affordable Housing Strategy

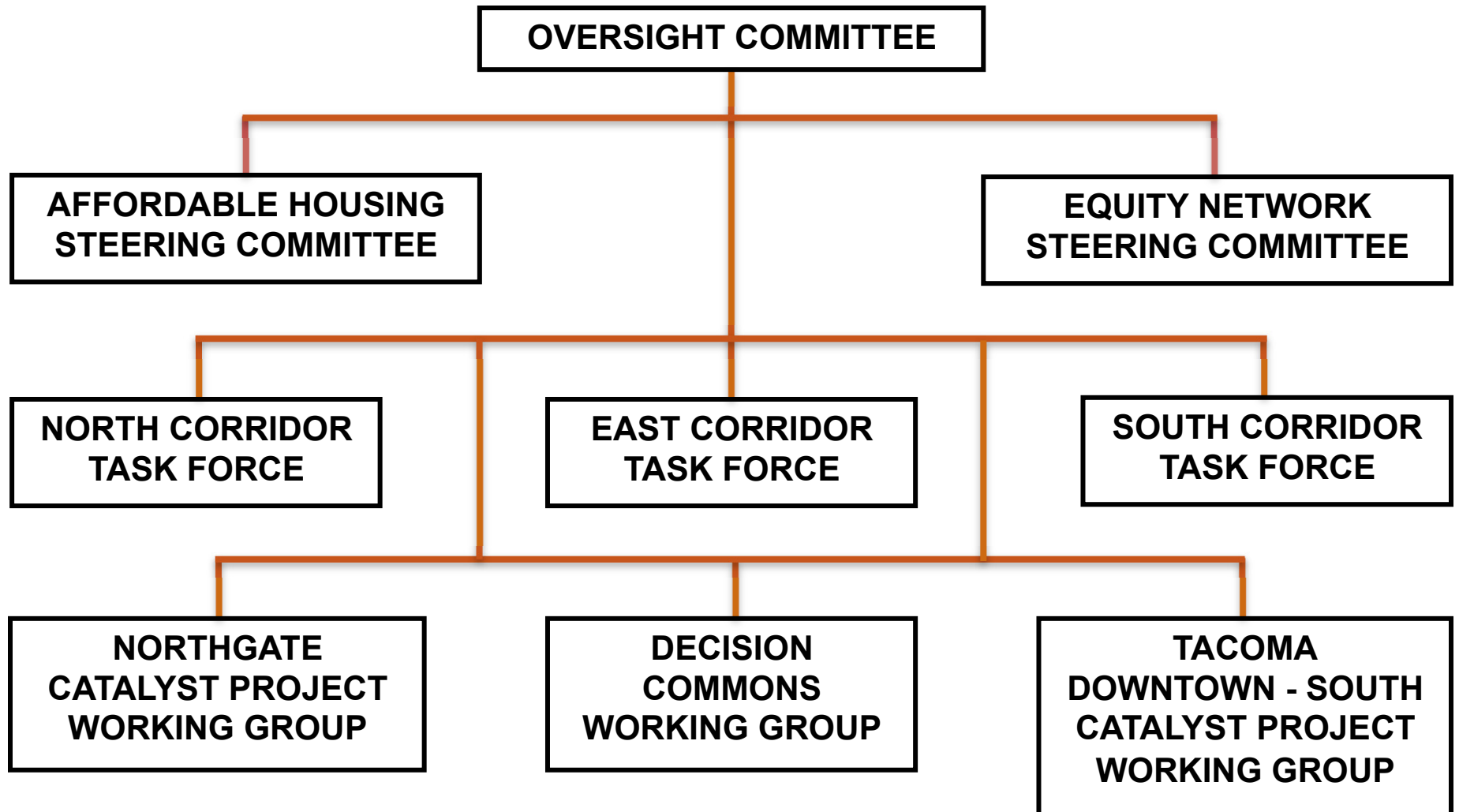
- Produce region-wide Fair Housing and Equity Assessment
- Research new tools: TIF, TOD Fund, Surplus Lands
- Provide technical assistance to local jurisdictions

## Demonstration Projects in Each Corridor

- Northgate and Tacoma Catalyst Projects
- Decision Commons in Bel-Red



# Organizational Structure



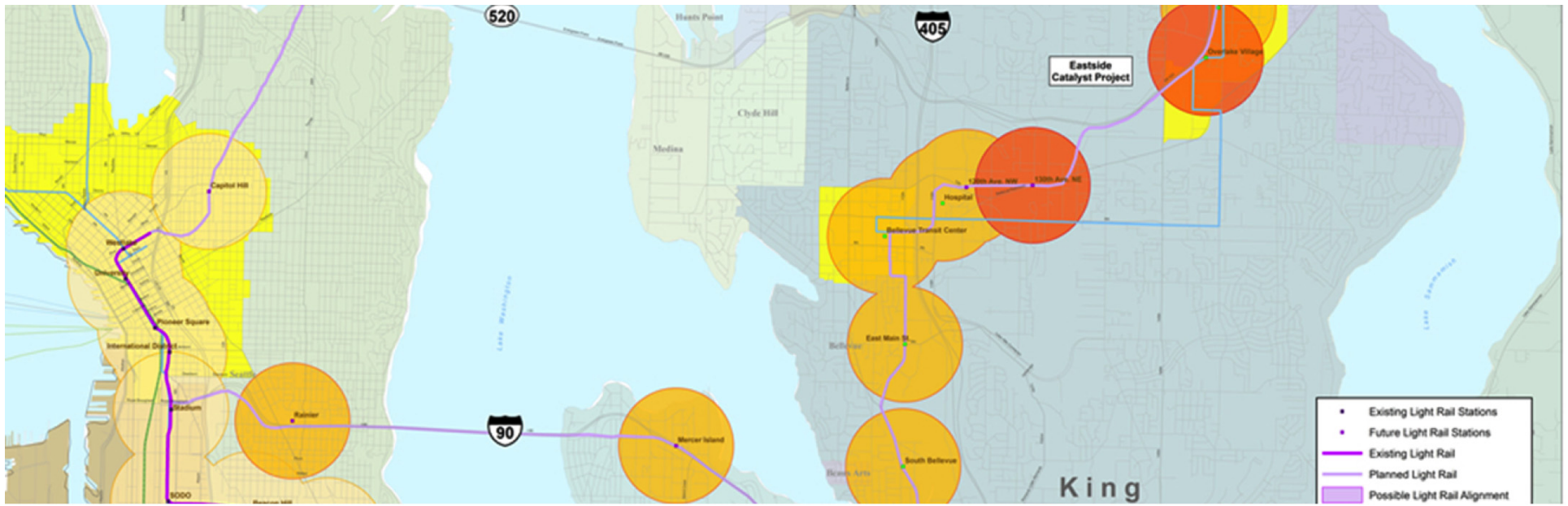
# Advancing Equity Through GTC

- Building a Regional Equity Network
- Ensure an equity framework is used in all aspects of GTC program
- Sub-Grants to Community Organizations
- Capacity building and peer learning
- Equity representatives part of governance structure
- Implement policies that support equitable development.

# Sub-grants to community organizations (\$450,000)

Organization	Geog	Amount	Brief Project Description
Refugee and Immigrant Services Northwest	SC	\$15,000	Workshops for 6 ethnic groups in Lynnwood/ Everett, identify and support Natural Leaders for each ethnic group to represent their community.
Snohomish County Transportation Coalition / Senior Services of Snohomish County	SC	\$5,000	Work with senior centers and senior housing locations along north corridor to collect data on needs, priorities and concerns.
Housing Consortium of Everett and Snohomish County	SC	\$7,000	Incorporate priorities of low-income residents into planning for a mixed-income, mixed-use development along Evergreen Way.
Hopelink/ Eastside Easy Rider Collaborative	EKC	\$5,854	Transit Communities Exchange Forum and Neigh. Conversation Cafes to enhance community involvement in east corridor.
Rainier Beach Community Empowerment Coalition	SEA	\$15,000	Engage youth and resident leaders to develop a Rainier Beach Transit Priorities Action Plan.
Seattle Chinatown International District PDA	SEA	\$15,000	Build capacity in the Vietnamese community to influence Little Saigon's development into a culturally rich, economically thriving TOD neighborhood.
East African Community Services	SKC	\$14,520	Organize and map African business owners, survey community members along SeaTac-Seattle corridor, and engage business in policy process.
Refugee Federation Service Center	SKC	\$11,000	Conduct research (focus groups, report) with refugee and immigrant communities in SKC to engage and make recs for future plans and policies.
Cross Cultural Collaborative of Pierce County / Centro Latino	T/PC	\$15,000	Community-planner dialogues, focus groups with six priority populations, and community forums in Pierce County.
Tacoma-Pierce County Affordable Housing Consortium	T/PC	\$7,500	Expand 2012 public forum to focus on social equity and engage community partners to help plan and organize forum.
<b>Total Recommended Funding (Round 1):</b>		<b>\$110,874</b>	





# For More Information

Heidi Hall, Equity Network Manager

[heidi@impactcapital.org](mailto:heidi@impactcapital.org)

Tony To, Executive Director, HomeSight

Co-Chair, Equity Network

[tony@homesightwa.org](mailto:tony@homesightwa.org)

Growing Transit Communities Program

<http://www.psrc.org/growth/growing-transit-communities>

